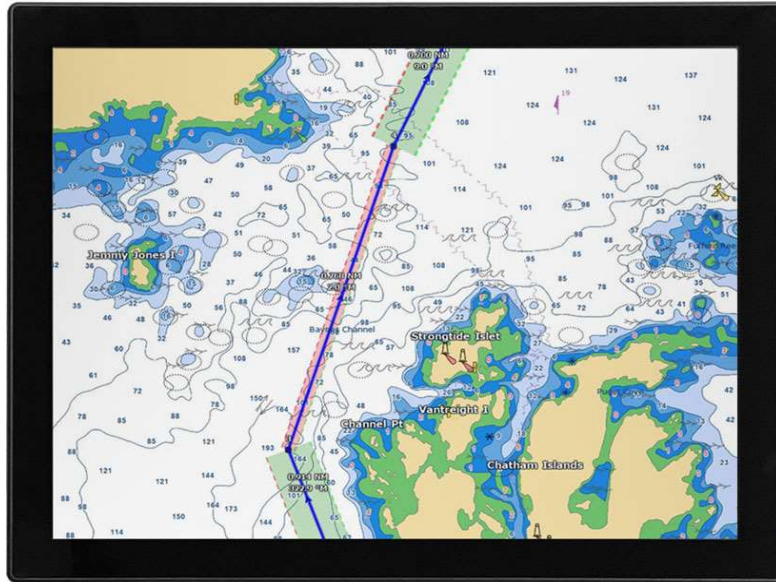


Nirolo Professional monitors

C-Line 12.1", 15", 17" and 19" LED monitors



Compact, optional multi-dim monitors with easy input switch



Nirolo C-Line LED monitors: the new generation extra compact marine monitors with 100% full dimming function, from size 12,1", 15", 17" up to 19". Modular with an extensive choice in a wide range of fronts and sizes: open frame, rear mount, chassis mount, panel mount, rackmount, flushmount, full flat front, glass mount, glass mount with full flat PCAP touch and or desktop model. The OSD menu, quick input change and dimming functions of built-in monitors are accessed by a unique all-in-one OSD dimming cable (2 meter length via RJ45), which knob can be mounted into the front, or further away from the monitor when required.

A user friendly menu structure enables the user to switch the input easily from VGA, DVI, HDMI en BNC. DP or HD-SDI are optional available.

Optional with touch screen SAW, resistive, IR, or multitouch PCAP Projected Capacitive touch. Also in Full flat front, True flat version. Optional sunlight readable.

Model number	NI-OF12C	NI-OF15C	NI-OF17C	NI-OF19C
Monitor size	12,1" LED	15" LED	17" LED	19" LED
Resolution	1024*768	1024*768	1280*1024	1280*1024
Active area	245 x 184 mm	304 x 228 mm	338 x 270 mm	376 x 301 mm
Colours	16,2M	16,2M	16,7M	16,7M
Contrast	550:1	700:1	800:1	1000:1
Brightness candela/m ²	350cd/m ²	250cd/m ²	250cd/m ²	350cd/m ²
Viewing angle	160°/140°	160°/150°	170°/160°	178°/178°
Response time (ms)	12 ms	8 ms	5 ms	5 ms
Dimming	0-100%	0-100%	0-100%	0-100%
Multi dimming	Optional	Optional	Optional	Optional
Speakers	Optional	Optional	Optional	Optional
Input	VGA, DVI, HDMI	VGA, DVI, HDMI	VGA, DVI, HDMI	VGA, DVI, HDMI
Video	BNC	BNC	BNC	BNC
Scaling	Full, 1:1, 4:3	Full, 1:1, 4:3	Full, 1:1, 5:4	Full, 1:1, 5:4
DisplayPort	Optional	Optional	Optional	Optional
Touch options	Resistive, SAW, PCAP, IR			
Full flat front	Optional			
Warranty	2 years	2 years	2 years	2 years
Power supply (standard)	Internal power supply, universal auto sensing AC90 to 260V, 50/60 Hz			
Power supply (option)	Ext. adapter 12Vdc, 5A	Ext. adapter 12Vdc, 5A	Ext. adapter 12Vdc, 5A	Ext. adapter 12Vdc, 5A
Power supply (option)	24Vdc-in	24Vdc-in	24Vdc-in	24Vdc-in
Power consumption	25W (2,5W)	20W (2,5W)	25W (<2W)	30W (2,5W)
Weight	3,5 kg	4 kg	5 kg	6 kg
Dimension open frame (mounting brackets included)	262,5x 222,2x 45,8 mm	345,3x292x58 mm	377,3x 338x 58,8 mm	406x 329x 60 mm
Cut out	262,5 x 208 mm	345,3 x 270 mm	377,3 x 316 mm	399 x 329 mm
VESA mounting size	75 mm	75 mm	75 mm	100 mm

Other options:

Anti reflection protection glass

Optical bonding

Sunlight readable

Panel mount

Flushmount

Glass mount

Glass mount touch

Made to measure 12,1" for Orlaco
mount for replacement camera monitors

19" radar look
monitors

Nirol Professional Displays B.V.

Biesboschhaven Noord 1b
4251 NL Werkendam The Netherlands
+31 (0)183-505064

www.nirol.nl

Specification subject to change without prior notice